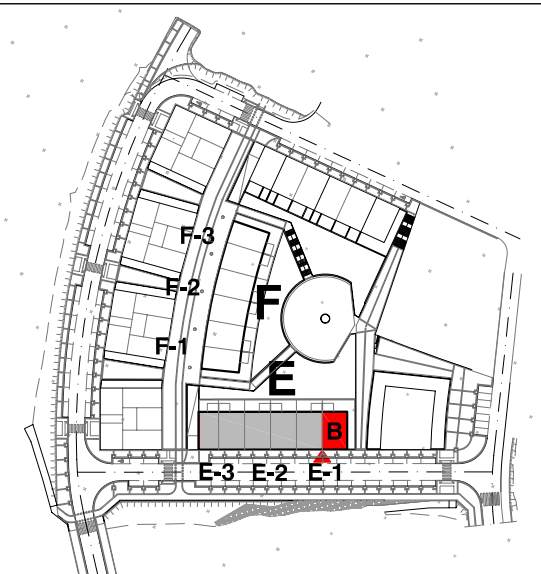
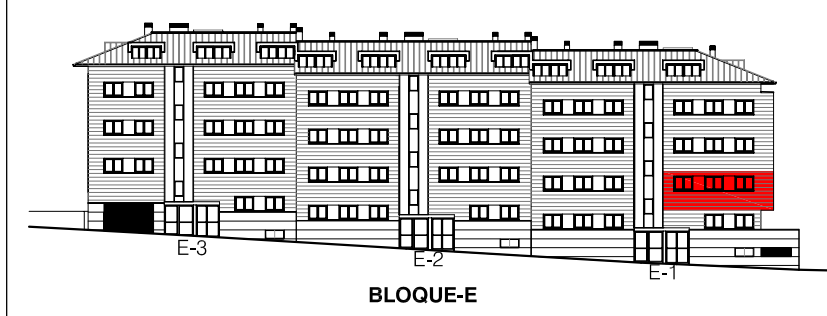
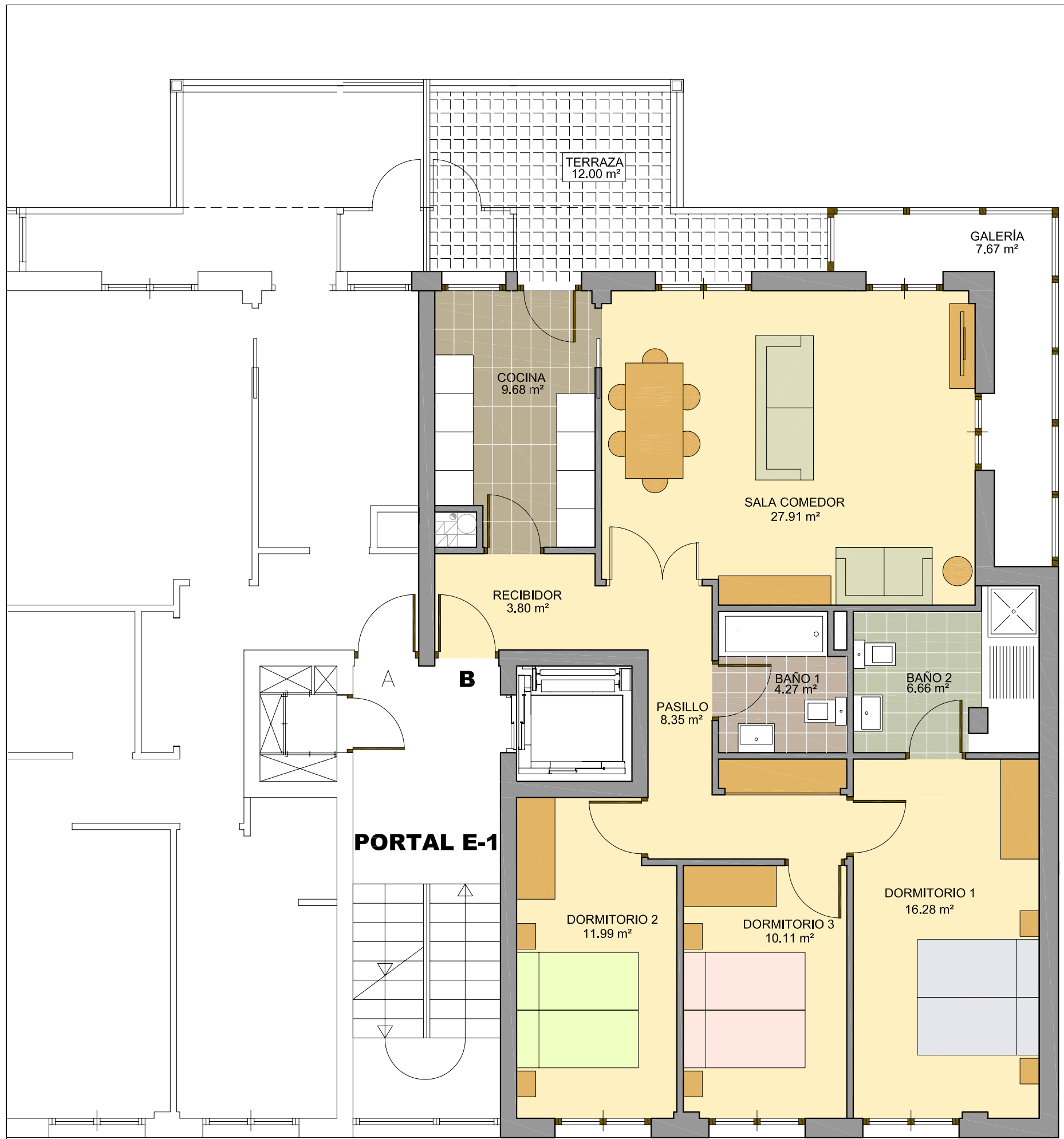
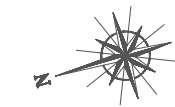




56 VIVIENDAS LIBRES
GARAJES Y TRASTEROS



BLOQUE E PORTAL E1 PLANTA 2ª - VIVIENDA - B

superficie útil cerrada.....	106.72 m ²
superficie útil terraza.....	12.00 m ²
superficie construida total.....	143.24 m ²

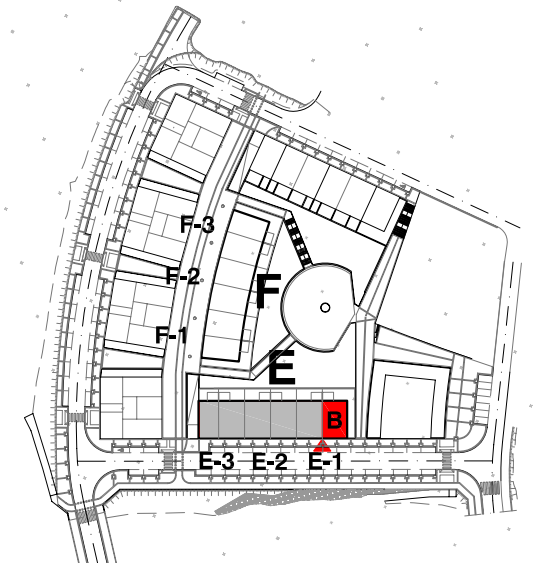
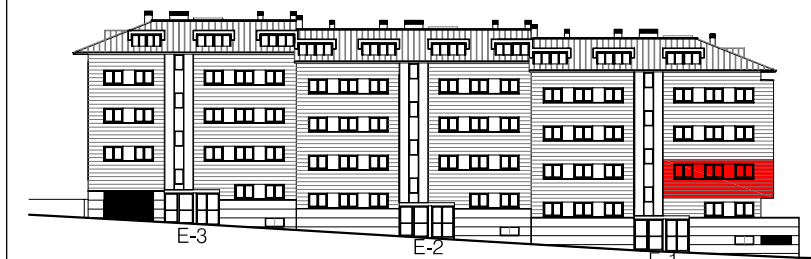
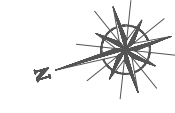
Noviembre 2016

promueve y construye





56 ETXEBIZITZA
 GARAJE ETA TRASTELEKU



E ERAIKINA E1 ATARIA 2 SOLAIRUA - B ETXEBIZITZA	
azalera erabilgarria.....	106.72 m ²
terrazaren azalera erabilgarria.....	12.00 m ²
eraikitako azalera.....	143.24 m ²

2016 ko Azaroa

sustapen eta eraikuntza

