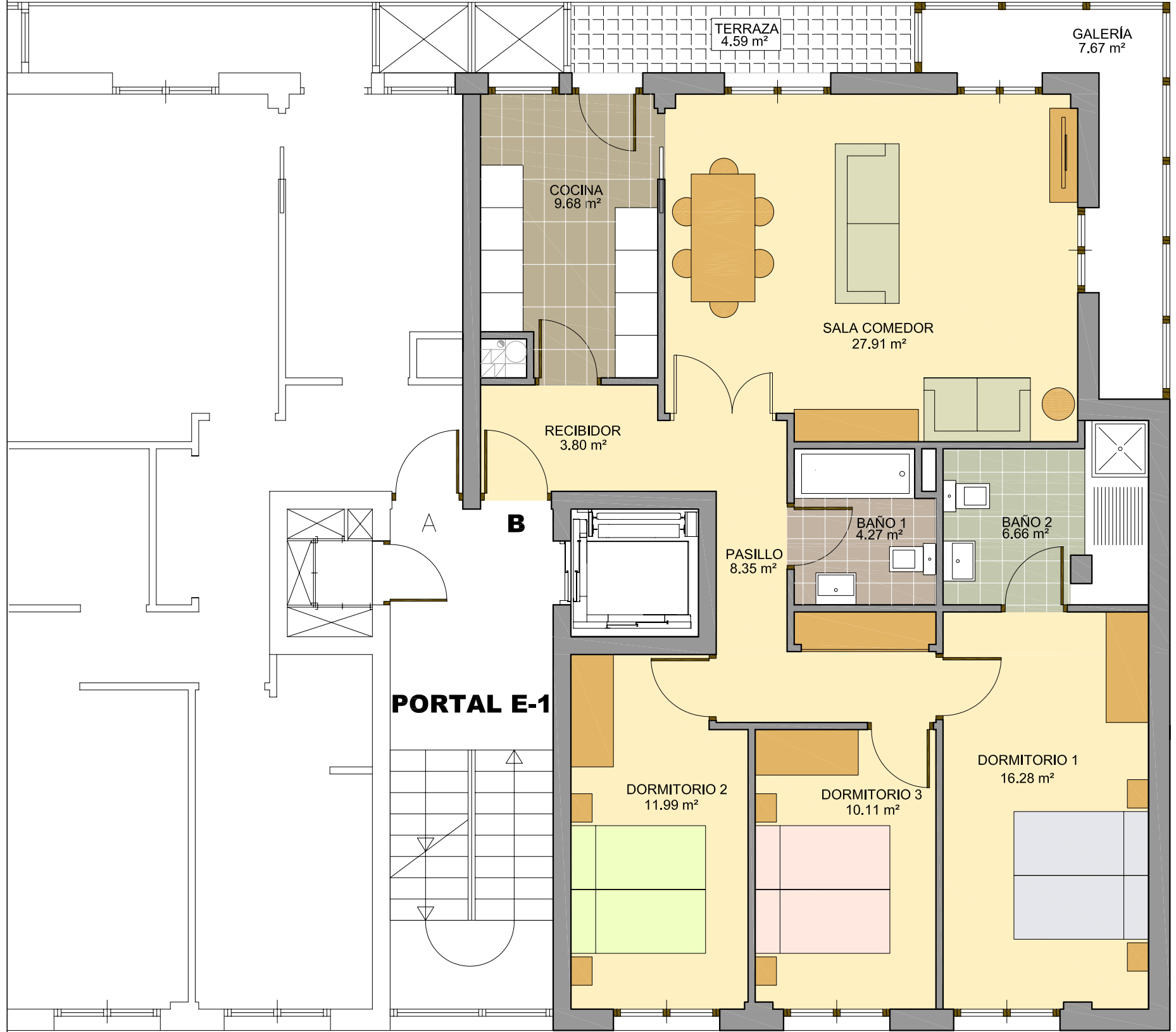
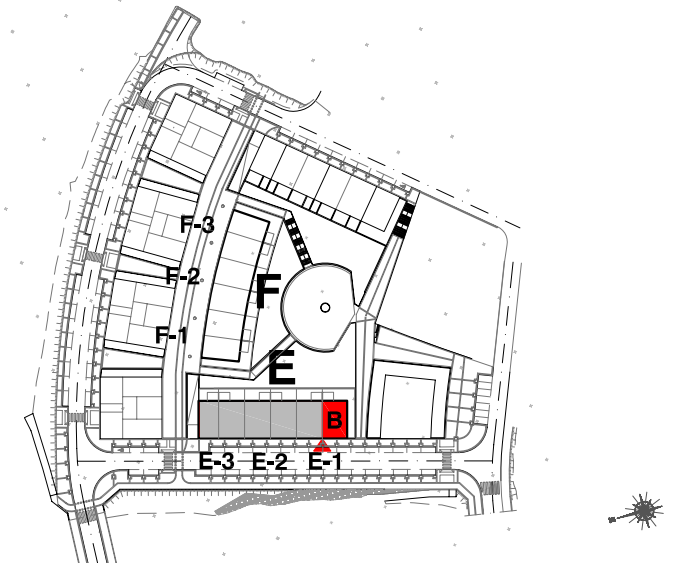
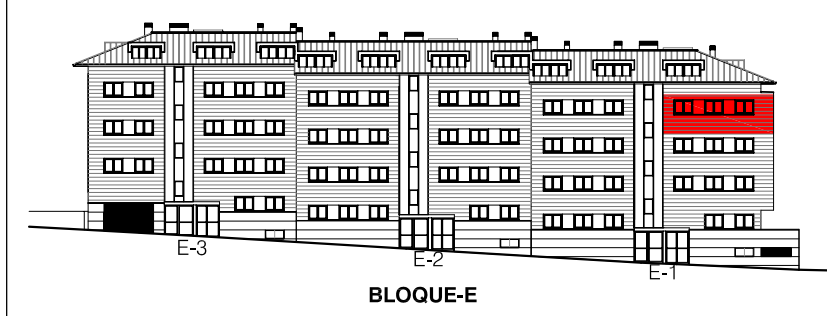
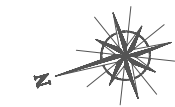




56 VIVIENDAS LIBRES
GARAJES Y TRASTEROS

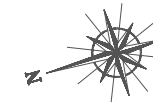


BLOQUE E PORTAL E1 PLANTA 4ª - VIVIENDA - B	
superficie útil cerrada.....	106.72 m ²
superficie útil terraza.....	4.59 m ²
superficie construida total.....	143.24 m ²

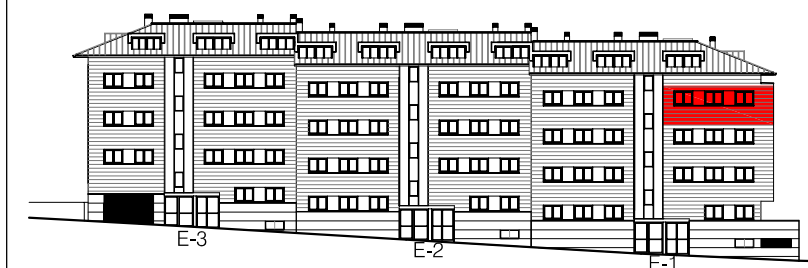
Noviembre 2016

promueve y construye

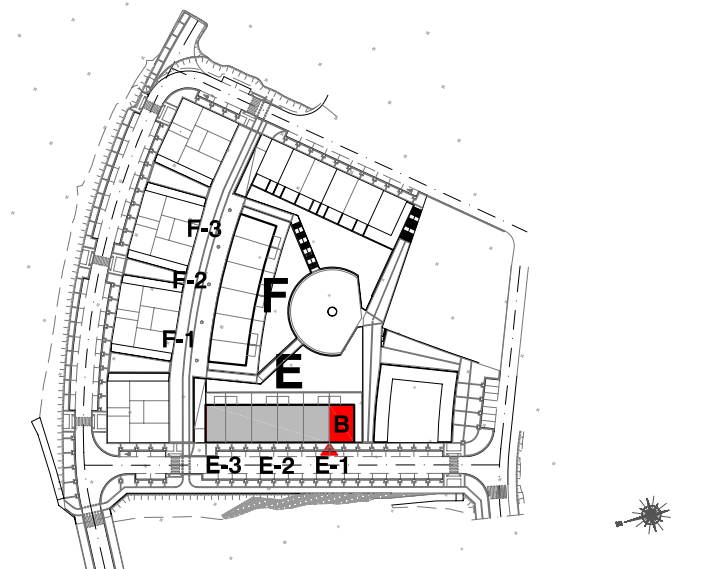




56 ETXEBIZITZA
 GARAJE ETA TRASTELEKU



E-ERAIKINA



E ERAIKINA E1 ATARIA 4 SOLAIRUA - B ETXEBIZITZA
 azalera erabilgarria..... 106.72 m²
 terrazaren azalera erabilgarria..... 4.59 m²
 eraikitako azalera..... 143.24 m²

2016 ko Azaroa

sustapen eta eraikuntza

