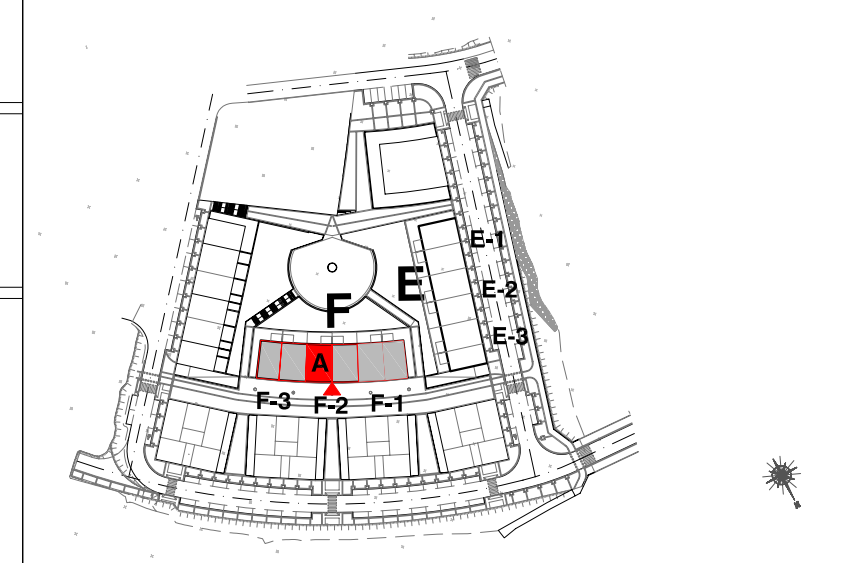
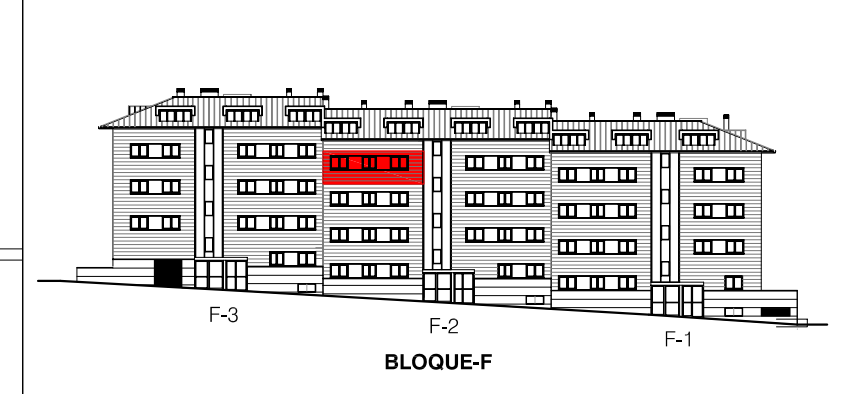
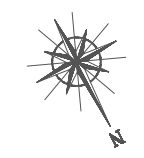




56 VIVIENDAS LIBRES
GARAJES Y TRASTEROS



BLOQUE F PORTAL F2 PLANTA 4ª - VIVIENDA - A

| | |
|----------------------------------|-----------------------|
| superficie útil cerrada..... | 100.71 m ² |
| superficie útil terraza..... | 4.31 m ² |
| superficie construida total..... | 133.39 m ² |

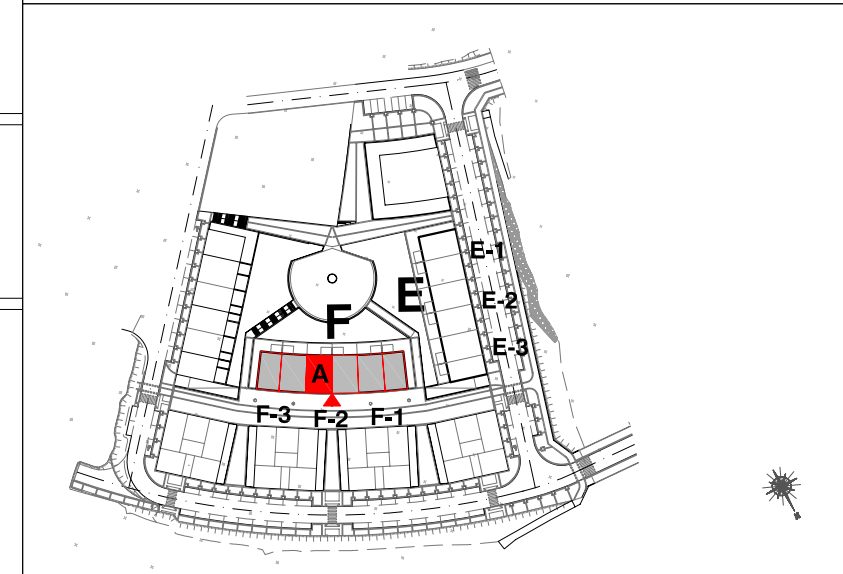
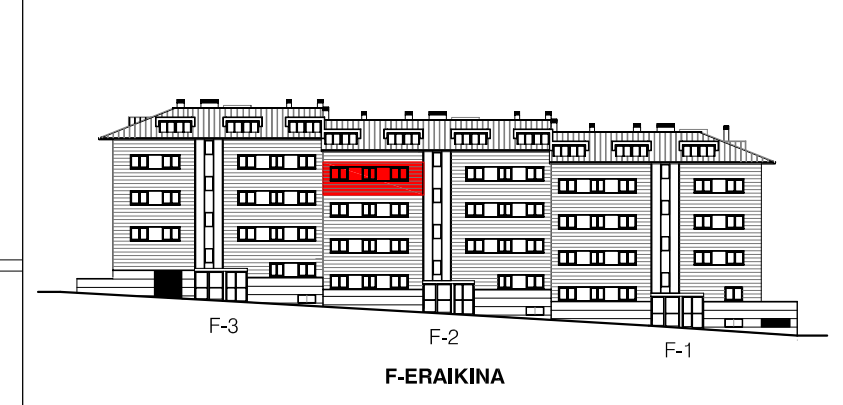
Noviembre 2016

promueve y construye





56 ETXEBIZITZA
 GARAJE ETA TRASTELEKU



| | |
|--|-----------------------|
| F ERAIKINA F2 ATARIA 4 SOLAIRUA - A ETXEBIZITZA | |
| azalera erabilgarria..... | 100.71 m ² |
| terrazaren azalera erabilgarria..... | 4.31 m ² |
| eraikitako azalera..... | 133.39 m ² |

2016 ko Azaroa

sustapen eta eraikuntza

